

LEPA S
SERIES
POWER SUPPLY

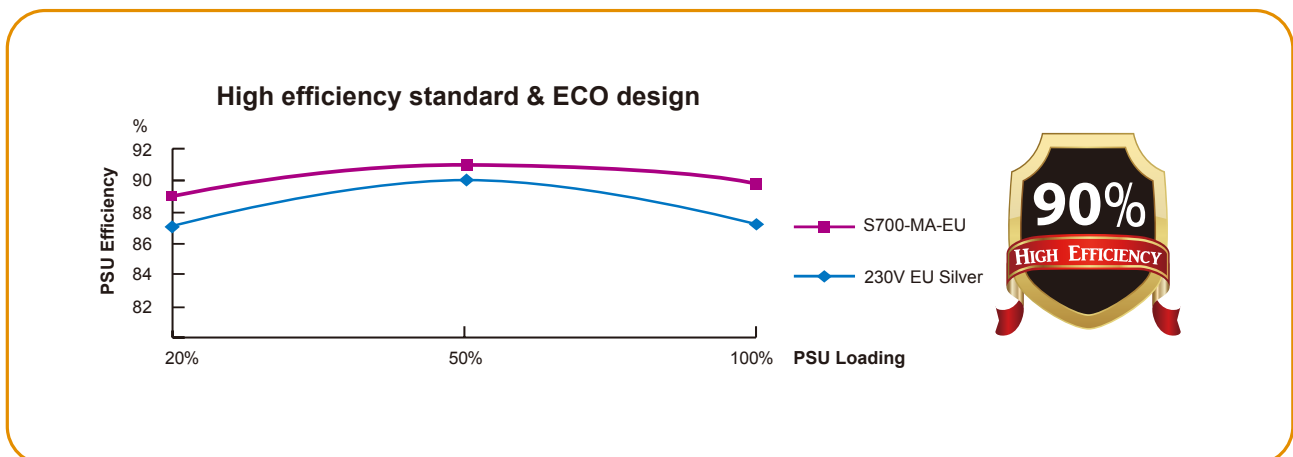


500W / 600W / 700W

Product Features



- 80 PLUS® 230V EU Silver certified with over 90% efficiency
- 13.9cm fan with ENERMAX patented Twister Bearing Technology ensures ultra silent cooling and long lifetime of fan (160,000 hours MTBF)
- Modular cable design with all flat cables simplifies the installation of PSU and cable management
- DC to DC converter design ensures system stability
- Powerful single +12V rail output offers great compatibility with heavy-duty graphics cards
- High efficiency +5Vsb circuit helps system meet EU ErP Lot 6 (2013) standards (lower than 0.5W power consumption at standby mode)
- System safety assured by comprehensive protection of Over Power, Over Voltage, Under Voltage, Over Current, Over Temperature, and Short-circuit
- ATX12V version 2.4 compliant



90% High efficiency
80 PLUS® 230V EU Silver certified with over 90% efficiency



ENERMAX patented Twister Bearing fan
 13.9cm fan with ENERMAX patented Twister Bearing Technology ensures ultra silent cooling and long lifetime of fan



Hybrid modular cabling design
 Modular cable design with all flat cables simplifies the installation of PSU and cable management



DC-to-DC
 DC-to-DC converter design ensures system stability



Main Japanese electrolytic capacitor
 Japanese capacitor offers great reliability & longer lifespan

Connectors

Model Number	Native Cables		Modular Cables			
	Mainboard 24P	CPU 4+4P(8P)	PCI-E 6+2P(8P)	SATA	4P Molex	FDD
S500-MA-EU	1 (60cm)	1 (70cm)	2	6	4	1
S600-MA-EU	1 (60cm)	1 (70cm)	4	8	4	1
S700-MA-EU	1 (60cm)	1 (70cm)	4	8	4	1

Product Specifications



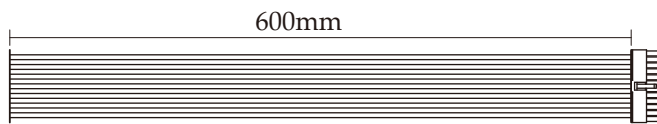
Model Number	S500-MA-EU		S600-MA-EU		S700-MA-EU	
AC Input Voltage	200-240VAC, 47-63Hz					
AC Input Current	4.0A		5.0A		5.0A	
DC Output						
	Rated	Combined	Rated	Combined	Rated	Combined
+3.3V	20.0A	110W	20.0A	120W	22.0A	120W
+5V	20.0A		20.0A		22.0A	
+12V	41.0A	492W	49.0A	588W	58.0A	696W
-12V	0.3A	3.6W	0.3A	3.6W	0.3A	3.6W
+5Vsb	2.5A	12.5W	2.5A	12.5W	2.5A	12.5W
Total power	500W		600W		700W	
Peak power	550W		660W		770W	
MTBF	> 100,000 hours @ 25°C					
Operating Temp	0 ~ 40°C					
Dimensions	150(W) x 86(H) x 160(D) mm					
Safety						
Shipping Information						
Bar code EAN	4710445321658		4710445321665		4710445321672	
Box dimensions	248(W) x 233(D) x 96.5 (H) mm					
Gross Weight / unit	2kg		2.5kg		2.5kg	
Carton dimensions	500(W) x 280(D) x 320(H) mm					
Q'ty / carton	6					
Gross Weight / carton	12.9kg		15.9kg		15.9kg	

Protection Point

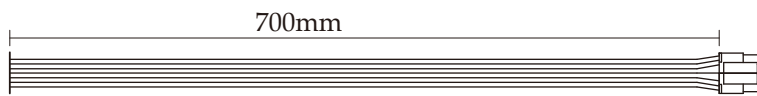
Model No.	S500-MA-EU			S600-MA-EU			S700-MA-EU		
DC Rail	+3.3V	+5V	+12V	+3.3V	+5V	+12V	+3.3V	+5V	+12V
Over Current Protection	24A-35A	24A-35A	44A-56A	24A-35A	24A-35A	52A-64A	24A-35A	24A-35A	61A-73A
Over Voltage Protection	4.5 V	7.0 V	15.6 V	4.5 V	7.0 V	15.6 V	4.5 V	7.0 V	15.6 V
Over Power Protection	110%~150% of rated max load								
Over Temperature Protection	Activated when PSU heat sink > 90-110°C								
Short-circuit Protection	Main output power shall latch into shut down state within 50ms when short circuit applied								

Cable Length

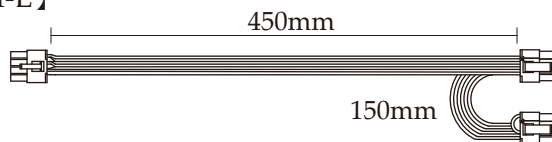
【24P MB】
500W x 1
600W x 1
700W x 1



【4+4P CPU】
500W x 1
600W x 1
700W x 1



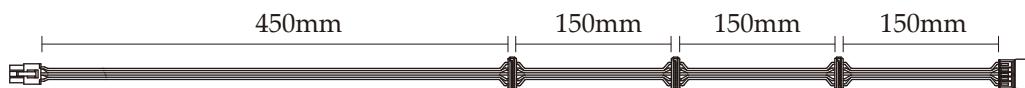
【2 X 6+2P PCI-E】
500W x 1
600W x 2
700W x 2



【3 X SATA】
500W x 2



【4 X SATA】
600W x 2
700W x 2



【4 X 4P Molex & FDD】
500W x 1
600W x 1
700W x 1

